

SOLUTION PRODUCT CODES

Product Code	Includes		
	2F	6F	SureFlex® Steerable Guiding Sheath
DLFK0001	✓	✓	Small curl
DLFK0003	✓	✓	Medium curl
DLFK0005	✓	✓	Large curl
DLFK0007	✓	✓	Steerable Sheath not included

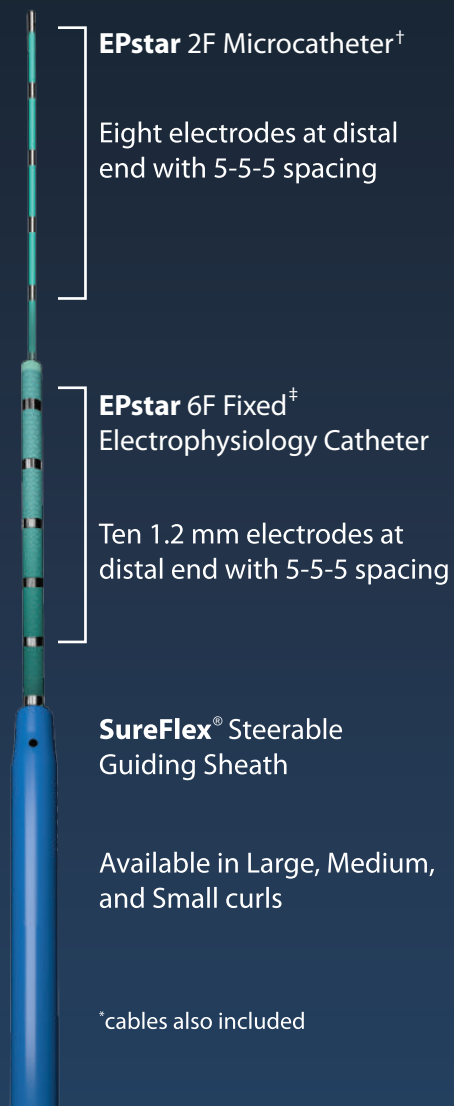
INDIVIDUAL DEVICE PRODUCT CODES

Product Code	Product Type	French Size	Usable Length	Curl Size
DCF-2-8-55-130	EPstar Diagnostic Catheter	2F	130 cm	N/A
DLF-6-10-55-95R	EPstar Diagnostic Catheter	6F	95 cm	N/A
DEX-10	Connector Cable	N/A	230 cm	N/A
DEX-14	Connector Cable	N/A	230 cm	N/A
TSK0004	SureFlex® Steerable Guiding Sheath	8.5F	63 cm	Small
TSK0005	SureFlex® Steerable Guiding Sheath	8.5F	63 cm	Medium
TSK0006	SureFlex® Steerable Guiding Sheath	8.5F	63 cm	Large

TELESCOPE

your devices to achieve deeper coronary venous mapping with the **EPstar Coronary Venous Mapping Solution**

Kit includes:*



EPstar 2F Microcatheter[†]

Eight electrodes at distal end with 5-5-5 spacing

EPstar 6F Fixed[‡] Electrophysiology Catheter

Ten 1.2 mm electrodes at distal end with 5-5-5 spacing

SureFlex® Steerable Guiding Sheath

Available in Large, Medium, and Small curls

*cables also included

**Images provided courtesy of Venkat N. Tholakanahalli MD

† EPstar 2F Fixed Electrophysiology Catheter
‡ EPstar 6F Fixed Electrophysiology Catheter with Lumen

1. Komatsu et al., 2018, Circ Arrhythm Electrophysiol - (2F EPstar Fix)
2. Ito et al., 2005, PACE – (2F Pathfinder, Cardima)
3. Kawamura et al., 2019, J Interv Card Electrophysiol - (2F EPstar Fix)
4. Yamamoto et al., 2014, Heart Rhythm - (2F EPstar)
5. Fujisawa et al., 2019, Pacing Clin Electrophysiol. - (2F EPstar Fix)

PRM-00972 EN J-1 V-1 © Copyright Baylis Medical Company Inc., 2020-2022. Baylis Medical Company Inc. reserves the right to change specifications or to incorporate design changes without notice and without incurring any obligation relating to equipment previously manufactured or delivered. All trademarks are property of their respective owners. CAUTION: Federal Law (USA) restricts the use of these devices to or by the order of a physician. Before use, consult product labels and Instructions for Use for Indications for Use, Contraindications, Warnings, Precautions, Adverse Events and Directions for Use.

Products shown for INFORMATION purposes only and may not be approved or for sale in certain countries.

Baylis Medical Company Inc.
5959 Trans-Canada Highway
Montreal, QC Canada H4T 1A1

Tel.: (514) 488-9801 / Fax: (514) 488-7209
www.baylismedical.com

Baylis
MEDICAL

Baylis
MEDICAL

EPstar

Coronary Venous Mapping Solution



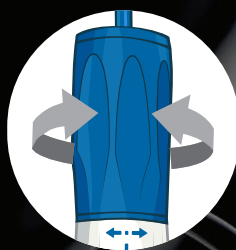
STREAMLINE
COMPLEX MAPPING

CANNULATE

SureFlex® Steerable Guiding Sheath

Cannulate the coronary sinus with the 8.5 F SureFlex® Steerable Guiding Sheath

Large and Medium curl options available for smooth cannulation of the coronary sinus



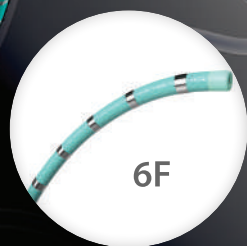
TruGlide™ HANDLING

High precision steering to confidently cannulate the coronary sinus with ease

GUIDE

EPstar 6F Fixed Catheter with Lumen

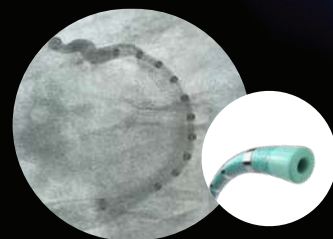
Navigate the coronary venous system using the decapolar 6F diagnostic catheter with lumen



6F

ELECTRODES

Ten 1.2 mm electrodes in 5-5-5 spacing



3F LUMEN

3F Lumen allows for flushing and aspiration of fluids, and is compatible with devices up to 0.035" diameter

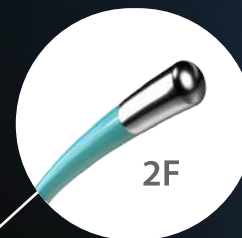
PINPOINT

EPstar 2F Microcatheter

Enable mapping and pacing in distal coronary venous system branches with the octapolar 2F Microcatheter† for deeper diagnostic precision

GO FURTHER. KNOW MORE.

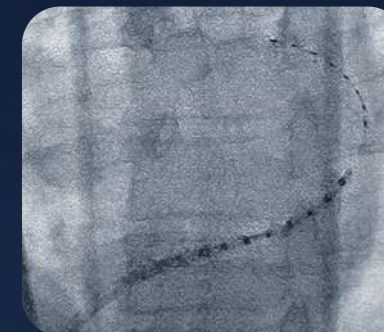
Access areas inaccessible to other catheters



2F

18 TOTAL ELECTRODES

Octapolar 2F and decapolar 6F catheters create a wide activation field in the coronary venous system



Deeper coronary venous mapping has been used for:

- Idiopathic VTs^{1,2}
- Complex ATs^{3,4}
- Mapping and pacing in VOM^{3,5}



Vein of Marshall Mapping

For more resources on complex EP procedures, please read our clinical dossiers or reach out to your local rep for more info