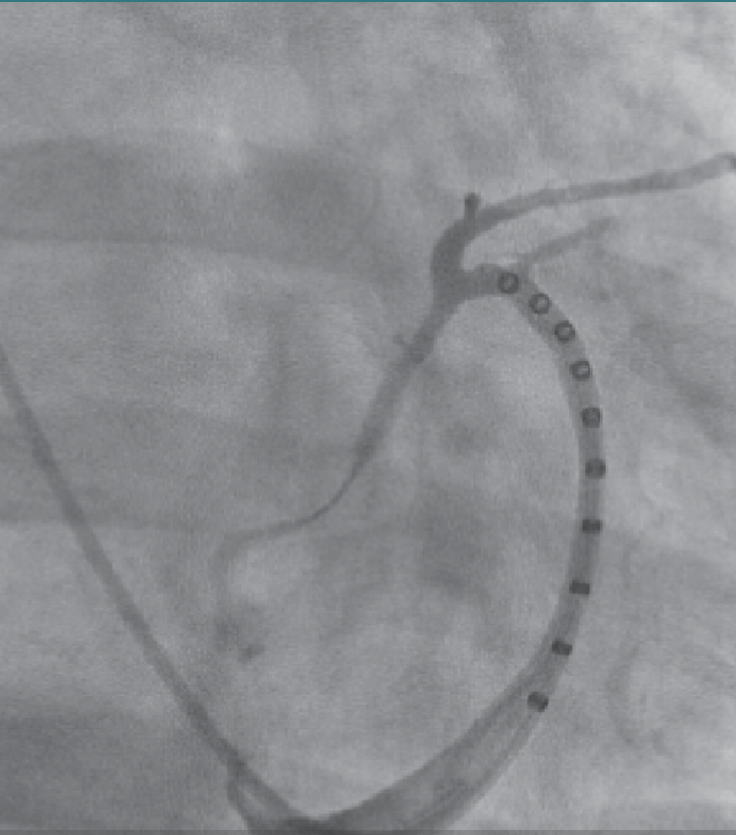


KNOW MORE

- Large Inner Lumen Size
- Able to flush contrast agent
- Compatible with 2F EPstar catheters and 0.035" guidewires
- For superior vein access only



Coronary sinus angiography with contrast

SPECIFICATIONS

Product Name	French Size	Product Code	Electrodes	Electrode Spacing	Electrode size	Usable Length
EPstar Fixed Electrophysiology Catheter with Lumen	6F	DLF-6-10-55-65	10 Decapolar	5-5-5 mm	1.2 mm	65 cm
EPstar Fixed Electrophysiology Catheter with Lumen	6F	DLF-6-10-28-65	10 Decapolar	2-8-2 mm	1.2 mm	65 cm
EPstar Fixed Electrophysiology Catheter	2F	DCF-2-8-55-130	8 Octapolar	5-5-5 mm	1.3 mm, distal tip: 1.5 mm	130 cm
EPstar Electrophysiology Cable (10 pins, resterilizable - 5 uses)	N/A	DEX-10	N/A	N/A	N/A	2.3 meters
EPstar Bundle 2F + 6F (555) Virtual Kit	N/A	DLK-2-55-6-55-65	N/A	N/A	N/A	N/A
EPstar Bundle 2F + 6F (282) Virtual Kit	N/A	DLK-2-55-6-28-65	N/A	N/A	N/A	N/A

PRM-00493 EN J-1.2 V-3 © Copyright Baylis Medical Company Inc, 2020. Baylis Medical Company Inc. reserves the right to change specifications or to incorporate design changes without notice and without incurring any obligation relating to equipment previously manufactured or delivered. The Baylis Medical logo is a trademark and/or registered trademark of Baylis Medical Company Inc. in the USA and/or other countries. All other trademarks are property of their respective owners. CAUTION: Federal Law (USA) restricts the use of these devices to or by the order of a physician. Before use, consult product labels and instructions for Use for Indications for Use, Contraindications, Warnings, Precautions, Adverse Events and Directions for Use. **Products shown may not be available in all jurisdictions**

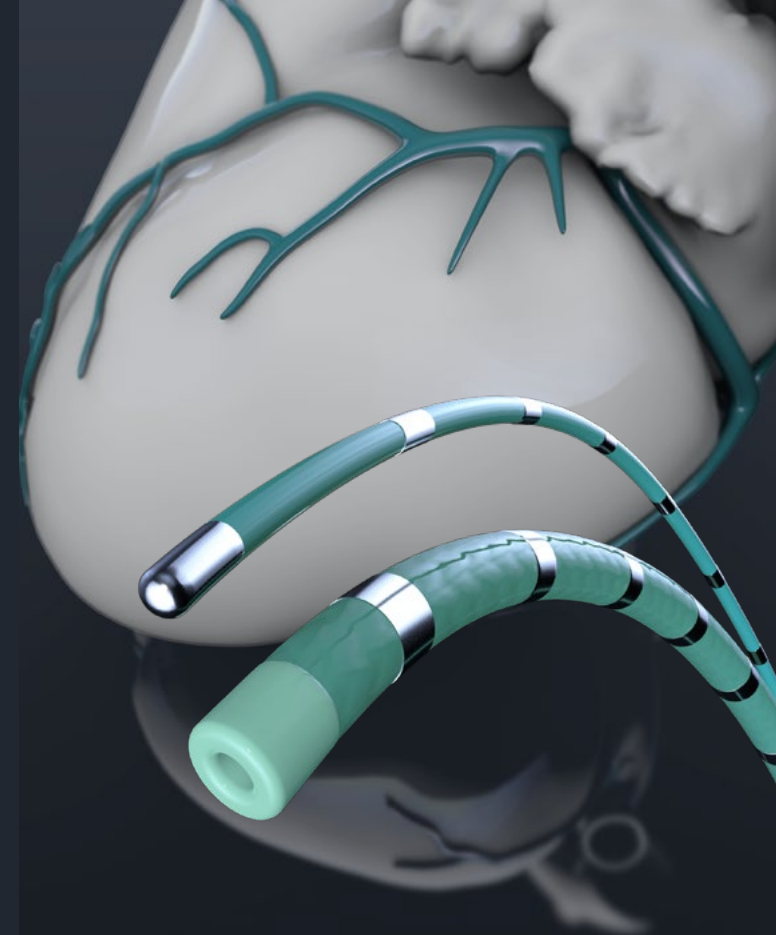
*Komatsu et al., 2018, Circ Arrhythm Electrophysiol. - (2F EPstar Fix)
 *Ito et al., 2005, PACE - (2F Pathfinder, Cardima)
 **Kawamura et al., 2019, J Interv Card Electrophysiol. - (2F EPstar Fix)
 **Yamamoto et al., 2014, Heart Rhythm - (2F EPstar)
 † Davis et al., 1995, Br Heart J.
 ‡ Kawamura et al., 2019, J Interv Card Electrophysiol. - (2F EPstar Fix)
 ‡ Fujisawa et al., 2019, Pacing Clin Electrophysiol. - (2F EPstar Fix)

Baylis
MEDICAL

JLL Japan Lifeline

Baylis
MEDICAL

EPstar Fixed Electrophysiology Catheters

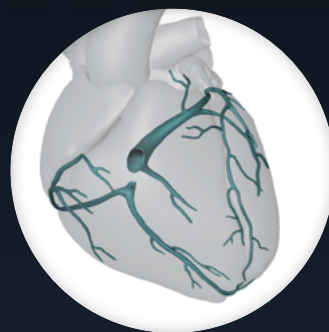


GO FURTHER KNOW MORE

Deeper diagnostic precision for coronary sinus access and beyond

GO FURTHER

- Reach previously inaccessible areas of the coronary sinus
- Flexible and atraumatic tip
- Pacing even from distal electrode



2F EXPLORE

Deeper CS mapping has been used for:

- Idiopathic VTs*
- Complex ATs**
- Left WPW[†]
- Mapping and Pacing in Vein of Marshall[‡]



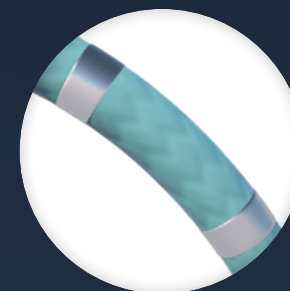
2F PACE

Pacing from all electrodes, including the distal electrode



2F & 6F BE CONFIDENT

Flexible and atraumatic distal tips facilitate confidence in coronary sinus access



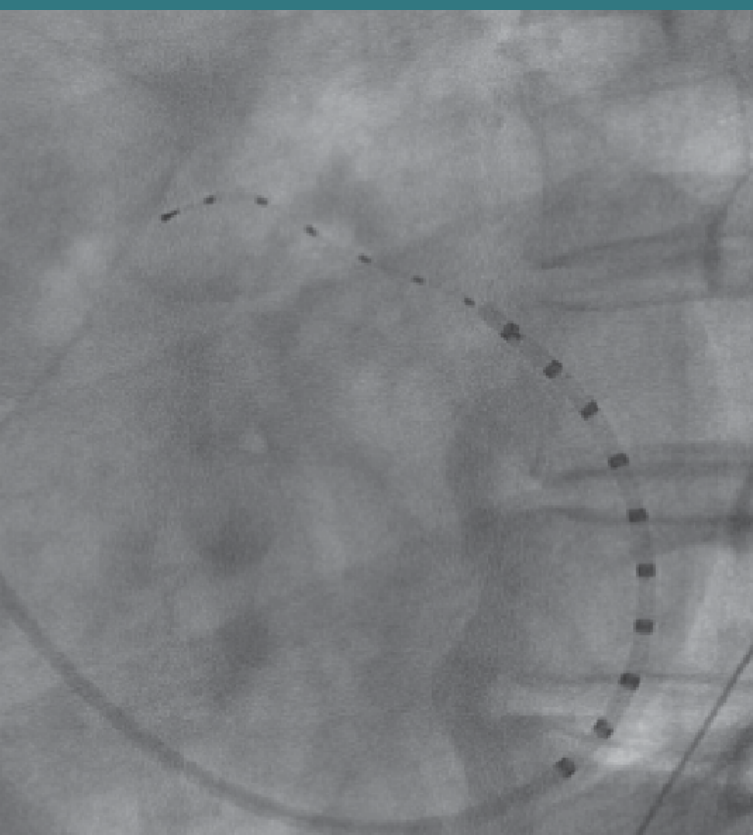
6F CONTROL

Fully braided shaft, even under electrodes, allows greater maneuverability



6F CHOOSE

Two electrode spacing choices, 2-8-2 or 5-5-5, to tailor your procedure



Distal mapping of coronary sinus