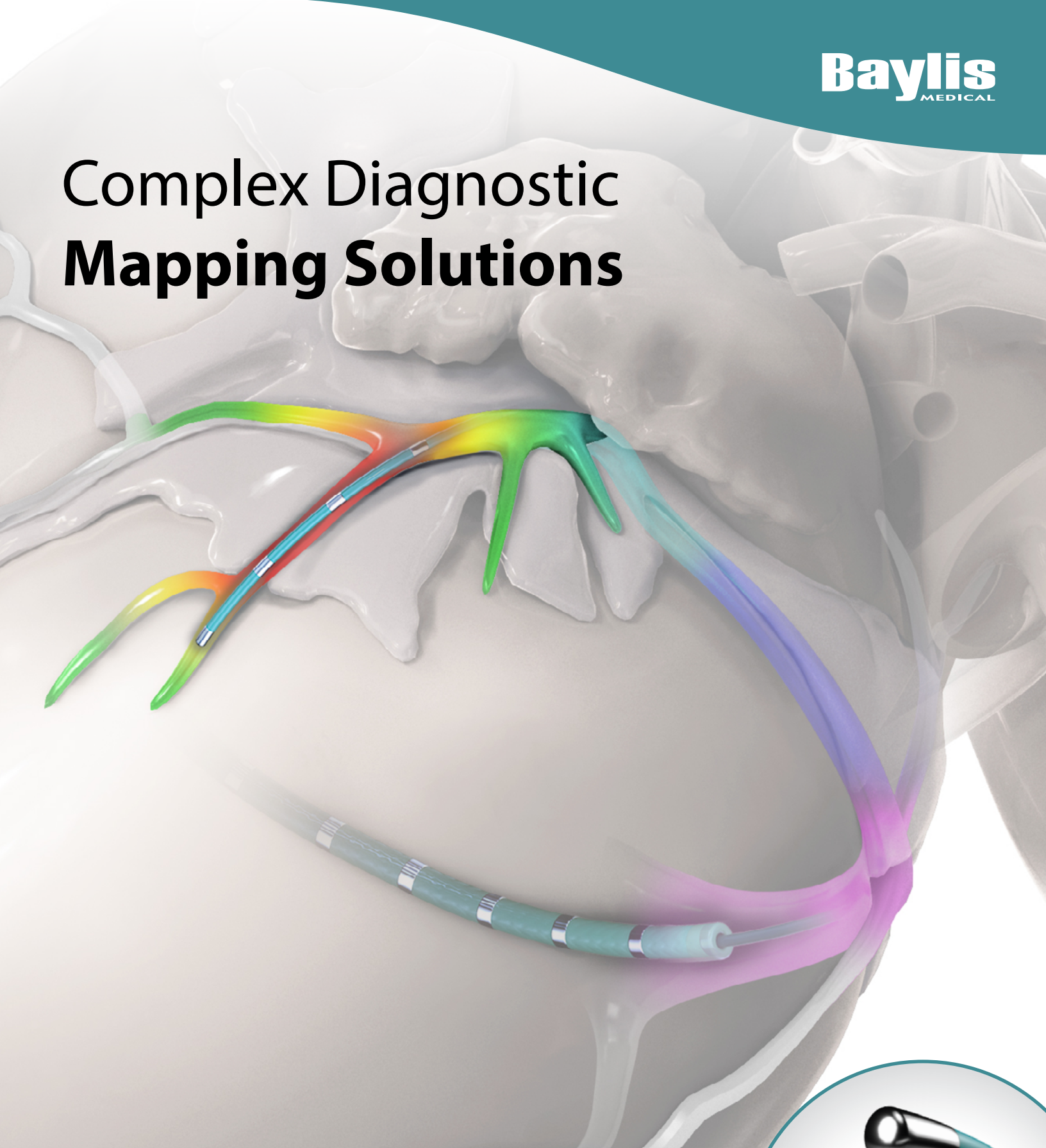
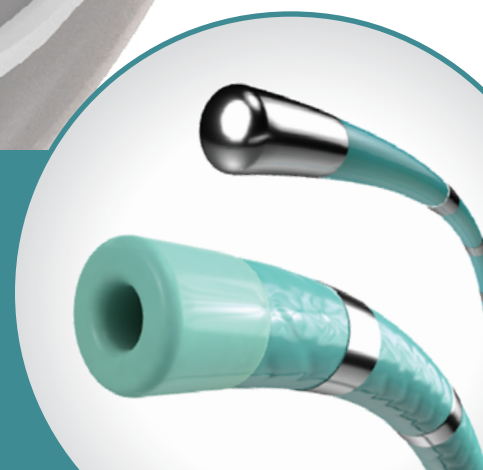


Complex Diagnostic Mapping Solutions



ENHANCED DIAGNOSTIC PRECISION FOR
CORONARY SINUS MAPPING AND BEYOND



2F Microcatheter*
GO FURTHER.

The **EPstar** 2F microcatheter enables mapping and pacing in distal coronary sinus (CS) branches, inaccessible to other catheters.

2F
The smallest diagnostic catheter on the market

6F Guiding Catheter**
FACILITATE.

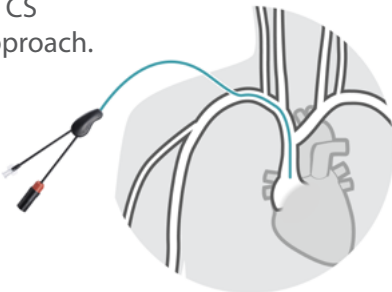
The **EPstar** 6F catheter is an EP catheter capable of pacing and mapping in the CS. It is torquable with a large lumen, facilitating placement and telescoping of the 2F microcatheter in the coronary venous system.

*EPstar 2F Fixed Electrophysiology Catheter
**EPstar 6F Fixed Electrophysiology Catheter with Lumen

1 SUPERIOR ACCESS TOOLKIT

6F Guiding Catheter

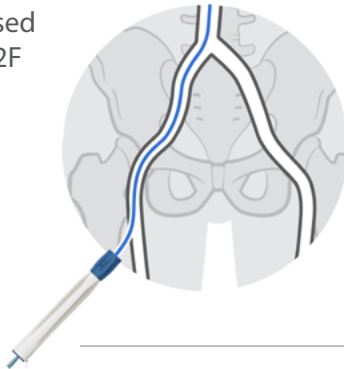
EPstar 6F catheter is specially curved to access and cannulate the CS from a superior approach.



FEMORAL ACCESS TOOLKIT

SureFlex® Steerable Sheath
TorFlex™ Transseptal Guiding Sheath

SureFlex® or **TorFlex™** sheaths can be used to introduce the 2F microcatheter.



2 NorthStar™
Coronary Sinus Guidewire

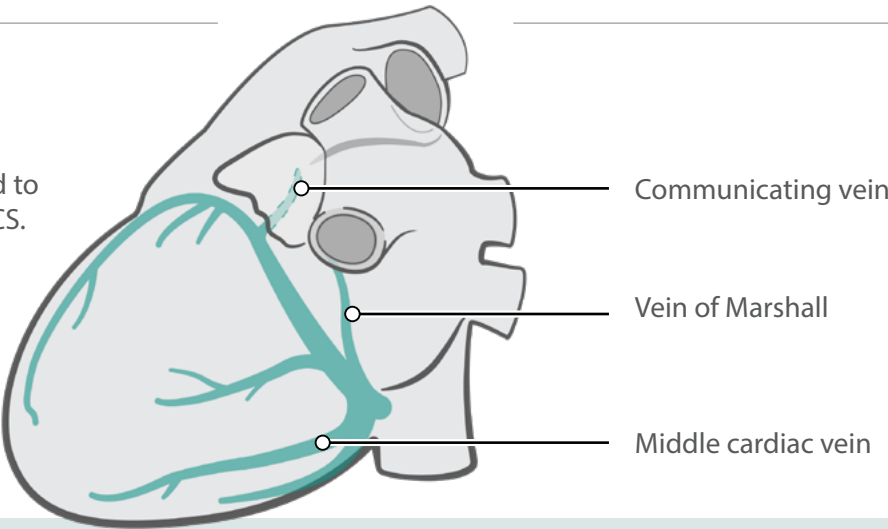
The smooth tracking and torquability of **NorthStar™** CS Guidewire facilitates CS navigation and branch subselection.

3 2F Microcatheter

2F microcatheter may be deployed to map in the distal branches of the CS.

2F mapping has been used for:

- Idiopathic VTs^{1,2}
- Complex ATs^{3,4}
- Left WPW⁵
- Mapping and pacing in VOM^{3,6}



2F CONFIDENCE

Atraumatic distal tip facilitates confidence in accessing branches of the CS.



18
Electrodes
Total

BROAD COVERAGE

With the octapolar 2F and decapolar 6F, achieve optimal coverage for pacing and mapping with 18 electrodes total.

6F LARGE LUMEN

Wide lumen allows for flushing and aspiration of fluids, and is compatible with devices up to 0.035" diameter.



2F ENHANCED PACING

Larger 1.5 mm and 1.3 mm electrodes for crisp electrograms and better pacing.



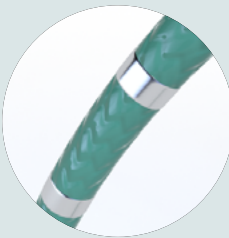
6F SOFT TOUCH

Maneuver confidently in the CS: stiffness decreases gradually towards a soft distal tip.



6F CONTROL

Fully braided shaft, even under electrodes, allows greater maneuverability.





EPstar Electrophysiology Catheters

Product name	Product code	Electrode spacing	Electrode size	Usable length	Electrodes
EPstar 2F Fixed Electrophysiology Catheter	DCF-2-8-55-130	5-5-5 mm	1.3 mm, distal tip: 1.5 mm	130 cm	8
EPstar 6F Fixed Electrophysiology Catheter with Lumen	DLF-6-10-55-65	5-5-5 mm	1.2 mm	65 cm	10
EPstar 6F Fixed Electrophysiology Catheter with Lumen	DLF-6-10-28-65	2-8-2 mm	1.2 mm	65 cm	10
EPstar Electrophysiology Cable (10 pins, resterilizable - 5 uses)	DEX-10	N/A	N/A	230 cm	N/A
EPstar Bundle 2F + 6F (555) Virtual Kit	DLK-2-55-6-55-65	N/A	N/A	N/A	N/A
EPstar Bundle 2F + 6F (282) Virtual Kit	DLK-2-55-6-28-65	N/A	N/A	N/A	N/A

Related products:



NorthStar™ Coronary Sinus Guidewire

Product name	Product code	Usable length	Outer diameter
NorthStar™ Coronary Sinus Guidewire, Straight tip, extra support	NGW-14-190-X	190 cm	0.014"
NorthStar™ Coronary Sinus Guidewire, Straight tip, distal support	NGW-14-190-D	190 cm	0.014"
NorthStar™ Coronary Sinus Guidewire, Straight tip, extra distal support	NGW-14-190-XD	190 cm	0.014"
NorthStar™ Coronary Sinus Guidewire, Modified J tip, extra support	NGW-14-190-X-J	190 cm	0.014"
NorthStar™ Coronary Sinus Guidewire, Modified J tip, distal support	NGW-14-190-D-J	190 cm	0.014"
NorthStar™ Coronary Sinus Guidewire, Modified J tip, extra distal support	NGW-14-190-XD-J	190 cm	0.014"



SureFlex® Steerable Sheath

Product code	Distal curve diameter	Usable sheath length	French size compatibility	Sheath overall length	Bidirectional curve angles
TSK85-32-BD-71S	Small (17 mm)	72 cm	8.5 F (2.8 mm)	91 cm	90° CCW, 180° CW
TSK85-32-BD-71M	Medium (22 mm)	72 cm	8.5 F (2.8 mm)	91 cm	90° CCW, 180° CW
TSK85-32-BD-71L	Large (50 mm)	72 cm	8.5 F (2.8 mm)	91 cm	90° CCW, 180° CW



TorFlex™ Transseptal Guiding Sheath

Product code	Sheath curve	Usable sheath length	French size compatibility
TF8-32-63-45	45°	63 cm	8 F (2.67 mm)
TF8-32-63-55	55°	63 cm	8 F (2.67 mm)
TF8-32-63-90	90°	63 cm	8 F (2.67 mm)
TF8-32-63-135	135°	63 cm	8 F (2.67 mm)
TF8-32-81-45	45°	81 cm	8 F (2.67 mm)

PRM-00493 EN J-1 V-4 © Copyright Baylis Medical Company Inc., 2020. Baylis Medical Company Inc. reserves the right to change specifications or to incorporate design changes without notice and without incurring any obligation relating to equipment previously manufactured or delivered. NorthStar, SureFlex, TorFlex and the Baylis Medical logo are trademarks and/or registered trademarks of Baylis Medical Company Inc. in the USA and/or other countries. All other trademarks are property of their respective owners. CAUTION: Federal Law (USA) restricts the use of these devices to or by the order of a physician. Before use, consult product labels and Instructions for Use for Indications for Use, Contraindications, Warnings, Precautions, Adverse Events and Directions for Use.

Products shown may not be approved in all jurisdictions.

1 Komatsu et al., 2018, Circ Arrhythm Electrophysiol - (2F EPstar Fix)
 2 Ito et al., 2005, PACE - (2F Pathfinder, Cardima)
 3 Kawamura et al., 2019, J Interv Card Electrophysiol - (2F EPstar Fix)
 4 Yamamoto et al., 2014, Heart Rhythm - (2F EPstar)
 5 Davis et al., 1995, Br Heart J.
 6 Fujisawa et al., 2019, Pacing Clin Clin Electrophysiol. - (2F EPstar Fix)

EPstar 2F and 6F catheters brought to you in collaboration with

JL Japan Lifeline

Baylis
MEDICAL

Baylis Medical Company Inc.
 5959 Trans-Canada Highway
 Montreal, QC Canada H4T 1A1

Tel.: (514) 488-9801 / Fax: (514) 488-7209
www.baylismedical.com