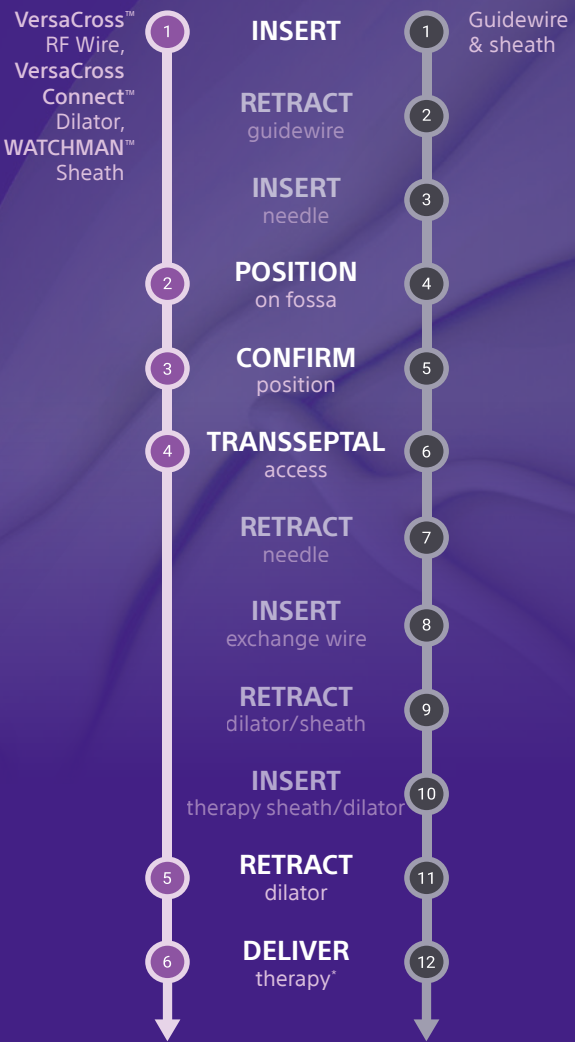


FAST TRACK

to your therapy delivery
in a **SINGLE SOLUTION**



VersaCross Connect™ LAAC Access Solution

DESIGNED for use with
WATCHMAN
FXD Curve™ Access System†

**3-IN-1
RF WIRE**
for ZERO EXCHANGE delivery
of WATCHMAN™ Access Sheath‡

Smooth transition between
VersaCross Connect™ Dilator and
WATCHMAN™ Access Sheath‡

Snap-lock designed for
WATCHMAN™ Access Sheaths‡

VersaCross Connect™ LAAC Access Solution

1. Choose your
**VersaCross™
RF Wire**

2. Choose your
**VersaCross Connect™
Transseptal Dilator**

Pigtail J-Tip

Dilator with
TRUform™
technology

Length: 180 cm, 230 cm
Diameter: 0.035"

Inner Diameter: 0.035"
Outer Diameter: 12F
Useable Length: 85 cm

Solution with Pigtail Wire

Part No.	Dilator curve	Wire length (cm)
VXAK0001	D0	180
VXAK0003	D1	180
VXAK0005	D0	230
VXAK0007	D1	230

Solution with J-Tip Wire

Part No.	Dilator curve	Wire length (cm)
VXAK0009	D0	180

* The therapy referred to here may be one of several left heart procedures that require transseptal access. Additional procedural steps and/or devices may be required to deliver the therapy. Before use, consult Instructions for Use for any devices accordingly.

† WATCHMAN™ Access Sheaths and devices sold separately.

‡ The VersaCross Connect™ Transseptal Dilator is for use with a 12F ID WATCHMAN™ Access Sheath that is 75 cm in length, specifically: WATCHMAN™ Access System [Models: M635TU40060, M635TU10060, M635TU20060]; WATCHMAN™ TruSeal™ Access System [Models: M635TU70010, M635TU70040, M635TU70020]; WATCHMAN FXD Curve™ Access System [Models: M635TU80010, M635TU80020]. VersaCross Connect™ LAAC Access Solution includes VersaCross Connect™ Transseptal Dilator and VersaCross™ RF Wire.

All trademarks are property of their respective owners. Patents Pending and/or issued. Caution: The law restricts these devices to sale by or on the order of a physician. Indications, Contraindications, Warnings, and Instructions For Use can be found in the product labelling supplied with each device or at www.baylismedical.com.

Products shown for INFORMATION purposes only and may not be approved or for sale in certain countries. This material not intended for use in France.

Boston Scientific is a Global Company. Please note that model numbers, indications, contraindications, warnings and specifications may differ depending on geographic region. Not all information displayed in this brochure may be licensed in accordance with Canadian law. Please contact your Boston Scientific representative for local labeling, product specifications and licensed model numbers.

Boston Scientific
Advancing science for life™

Baylis Medical Company Inc.
5959 Trans-Canada Highway
Montreal, QC Canada H4T 1A1

www.baylismedical.com
info@baylismedical.com

General Inquiries
(514) 488-9801

© 2023 Boston Scientific Corporation or its affiliates.
All rights reserved.
EP-1536805-AA

**VersaCross Connect™
LAAC Access Solution**

**ZERO EXCHANGE
WATCHMAN FXD Curve™
Access System Delivery**

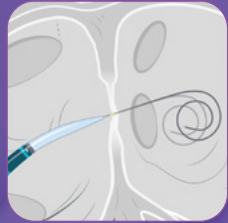
ZERO EXCHANGE

WATCHMAN™ Access Sheath Delivery[†]

EXCHANGELESS 3-in-1 RF Wire



1 Start at the SVC



2 RF transseptal puncture



3 Deliver WATCHMAN™ Sheath

INSTANTLY DEPLOY

0.035" WIRE

to deliver
WATCHMAN FXD Curve™
Access System[†]
with confidence



the right **CURVE** at the right **TIME**



TRANSEPTAL CURVE

VersaCross Connect™
Transseptal Dilator with
TRUform™ shapeable
technology to optimize
transseptal approach



THERAPY DELIVERY CURVE

WATCHMAN™ Access
Sheath retains its
curve for therapy
delivery

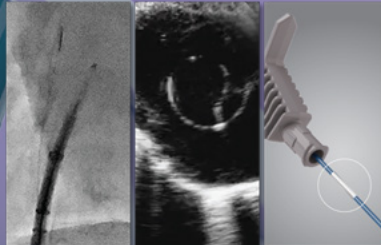
DELIVER THERAPY ON TARGET



TRUform™
Shapeable Technology



Precision RF
Puncture Technology



OMNIviz™
Technology

Reliably locate your **VersaCross Connect™**
solution on fluoroscopy, ultrasound and visibly
with positional markers

VersaCross Connect™
LAAC Access Solution