

**VersaCross™**  
RF Wire-Based Platform

**NRG™**  
RF Needle-Based Platform



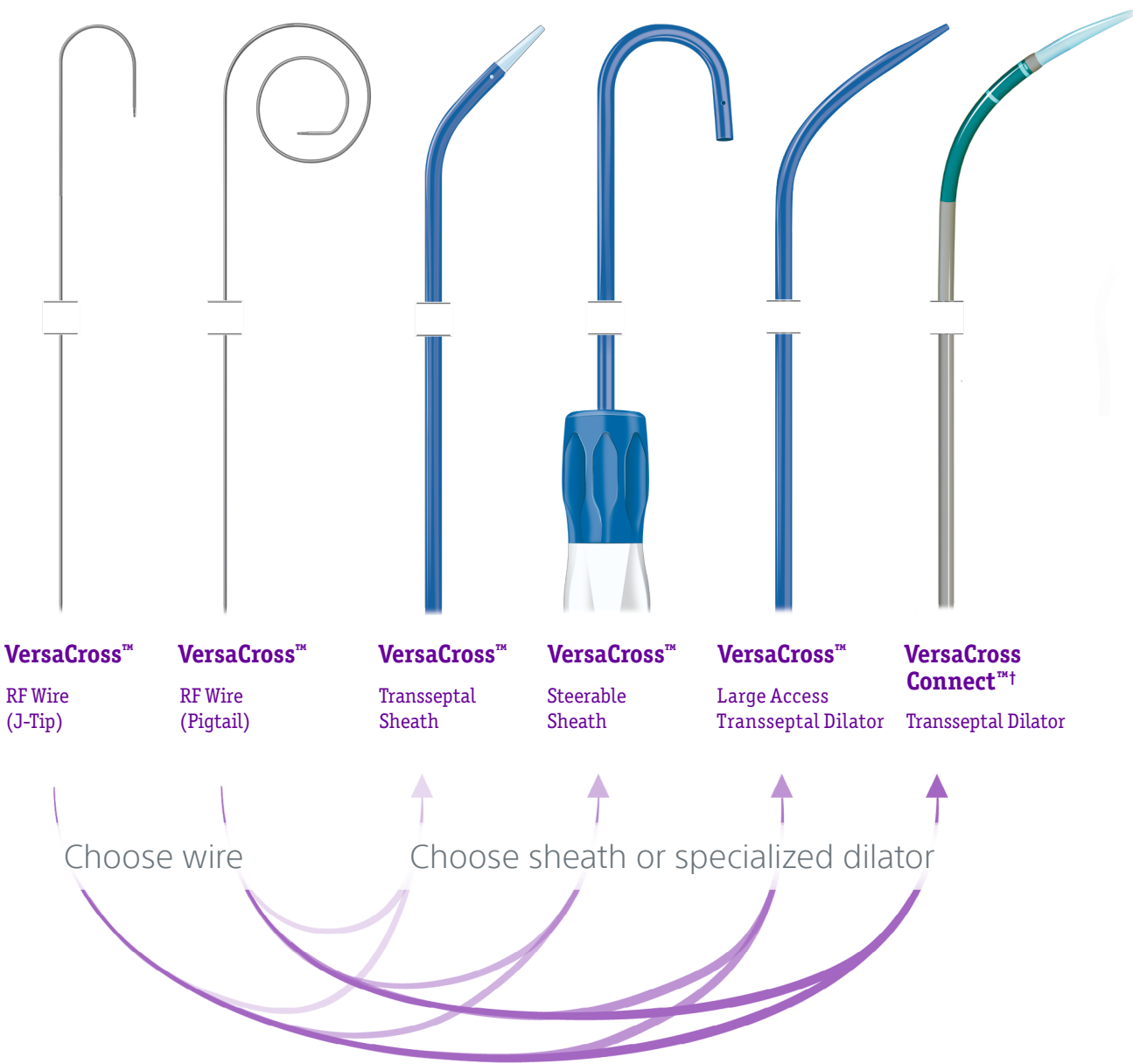
# ENABLING LEFT HEART THERAPIES

A full spectrum of solutions for any transseptal procedure

# PROVEN RF TRANSSEPTAL FOR ALL NEEDS

## Transseptal Reimagined

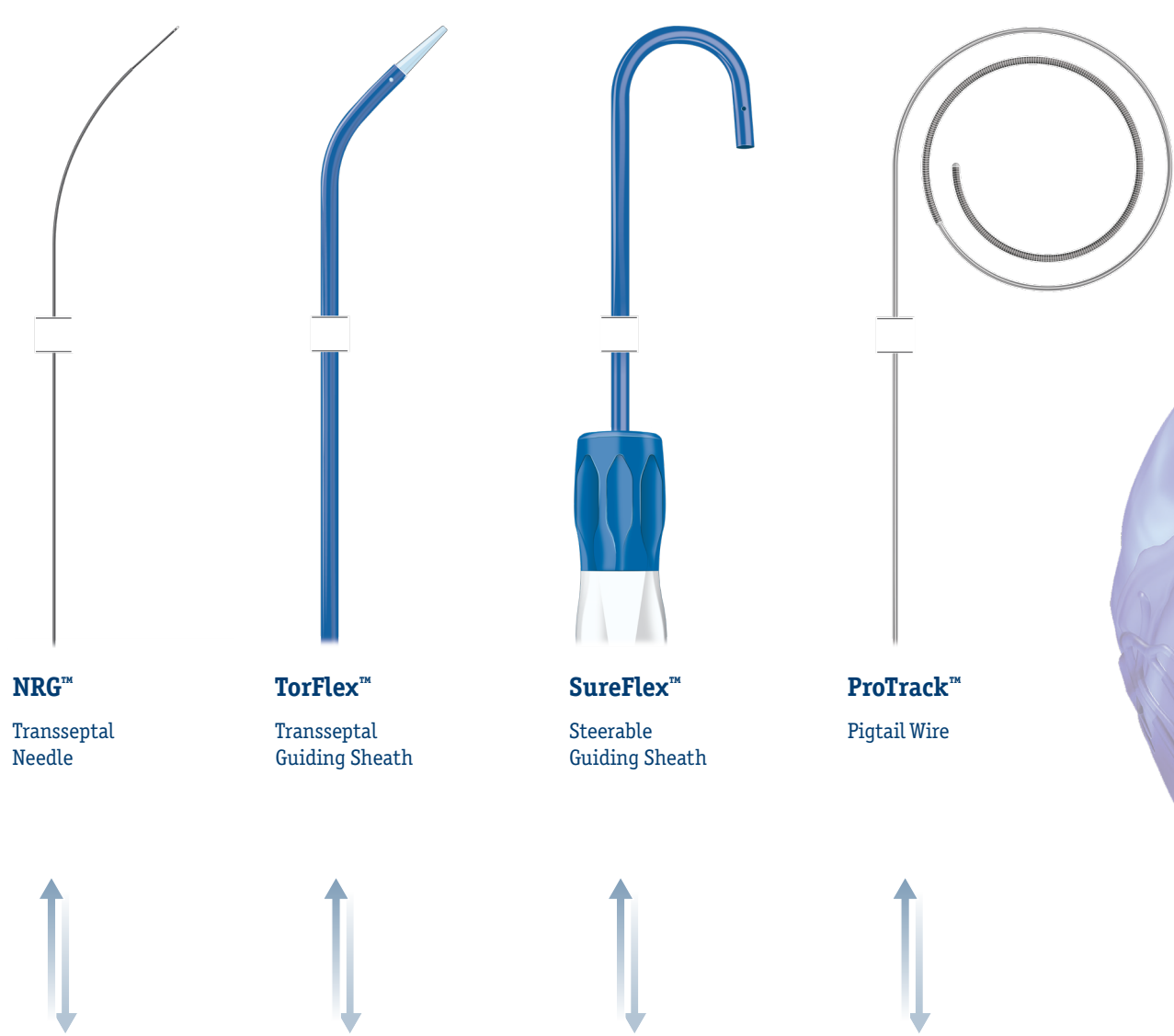
The only exchangeless\* solution  
for access-to-delivery of left heart therapy devices



PERSONALIZE YOUR SOLUTION

## The Standard in Transseptal Access

Interchangeable solutions that  
easily integrate with your current workflow



INTERCHANGEABLE DEVICES

\* VersaCross™ RF Wire can be used, without exchanges, as a guidewire, as a transseptal puncture device or as an exchange rail for delivering therapy sheaths.  
† The VersaCross Connect™ Transseptal Dilator is for use with a 12F ID WATCHMAN™ Access Sheath that is 75 cm in length, specifically: WATCHMAN™ Access System [Models: M635TU40060, M635TU10060, M635TU20060]; WATCHMAN™ TruSeal™ Access System [Models: M635TU70010, M635TU70040, M635TU70020]; WATCHMAN FXD Curve™ Access System [Models: M635TU80010, M635TU80020]. WATCHMAN™ Access Sheaths and devices sold separately.



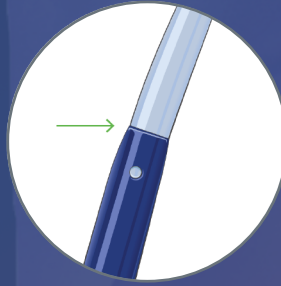
# TRANSSEPTAL SOLUTIONS FEATURE:

## Benchmark Technology:



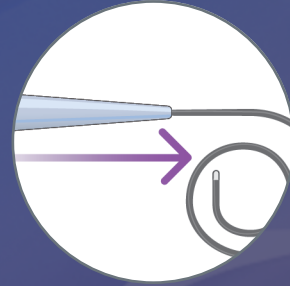
### Proven RF Puncture Technology

Precise RF puncture technology to optimize transseptal location for any anatomy



### Smooth Transition

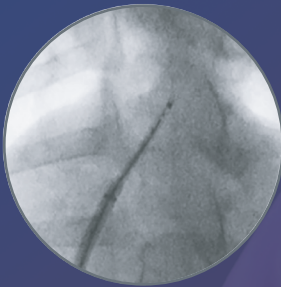
Facilitate advancement across septum with a sleek dilator-to-sheath profile



### Secure effortless delivery

Instantly gain and maintain access without exchanges

## OMNIVIZ™ Technology:



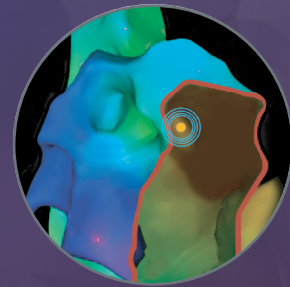
### Radiopaque

Visualize your tip on fluoroscopy



### Echogenic

Reliably locate your active tip on ultrasound for precise puncture



### Mapping

Track and mark RF tip position on your mapping system

**Boston  
Scientific**

Advancing science for life™

All trademarks are property of their respective owners. Patents Pending and/or issued. Caution: The law restricts these devices to sale by or on the order of a physician. Indications, Contraindications, Warnings, and Instructions For Use can be found in the product labelling supplied with each device or at [www.baylismedical.com](http://www.baylismedical.com).

Products shown for INFORMATION purposes only and may not be approved or for sale in certain countries. This material not intended for use in France.

Boston Scientific is a Global Company. Please note that model numbers, indications, contraindications, warnings and specifications may differ depending on geographic region. Not all information displayed in this brochure may be licensed in accordance with Canadian law. Please contact your Boston Scientific representative for local labeling, product specifications and licensed model numbers.

Baylis Medical Company Inc.  
5959 Trans-Canada Highway  
Montreal, QC Canada H4T 1A1

[www.baylismedical.com](http://www.baylismedical.com)  
[info@baylismedical.com](mailto:info@baylismedical.com)

General Inquiries  
(514) 488-9801

© 2023 Boston Scientific Corporation  
or its affiliates. All rights reserved.

EP-1536604-AB